



Ships Particulars

(Details are believed to be correct, but are not guaranteed.)

IMO number/Flag/Build:

- KEITUM: 9214604/ Antigua and Barbuda/2001
- KAMPEN: 9214587/Antigua and Barbuda/2001

Tonnage:

- DWT (without tweendeck): about 11.900 mt
- Weight of tweendeck pontoons: about 272 mt
- GT/NT: 8861/4238
- Suez/Panama GT/NT: 8854/8095

Type:

- Dry cargo Mpp/Container vessel
- Flush removal T/D in hold no. 2
- Equip. for carriage of containers

Dimensions:

- LOA: 134,15 m
- Lpp: 126,25 m
- Beam: 20,40 m
- Draft Summer SW: 8,38 m
- Air draft: 35,10 m

Holds:

- 3 box-shaped double skinned cargo holds
- Hold 1&3 narrow stepwise in container dimensions
- Steel floored tanktop with flush container shoes
- Fitted with 8 steel tweendeck pontoons for hold no.2
- Hold no.2 can be divided into 4 grain compartments by vertically fitting the 8 tweendeck pontoons
- Flush removable tweendeck in hold 2

Capacity:

- Grain/Bale
- Hold no.1: 3120 m³
- Hold no.2: 9255 m³
- Hold no.3: 2326 m³
- Total: 14701 m³

Heights:

- Lower hold - Hatch cover: 11,75 m
- Lower hold - Tweendeck (pos1): 6,00 m
- Tweendeck (pos1) - Hatch cover: 5,15 m
- Lower Hold - Tweendeck (pos2): 8,00 m
- Tweendeck (pos2) - Hatch cover: 3,15 m

Hatch:

- Hold no.1: 26,40 x 15,30/10,20 m , 4 pontoons
- Hold no.2: 52,00 x 15,30, 8 pontoons
- Hold no.3: 13,60 x 15,30 m, 2 pontoons
- MacGregor non-sequential pontoon hatch cover

Hold equipment:

- 20/25 air changes per hour (based on empty holds)
- CO₂ fitted in all 3 cargo holds
- Suitable for IMO cargoes
- Cargo light fitted in all 3 cargo holds

Cranes (SWL 150 ts)

- 2 Liebherr electrohydraulic cranes mounted in port side combinable up to 300 mt SWL subject to dimensions and hook points of unit to be handled
- Standard rigging of the cranes is 40 mt
- Jib height 34,0 m
- Cranes fitted with 80 mt and 150 mt heavy lift brackets
- Slewing speed: 0,75 rpm

Machinery/Propeller

- Wartsila 8L46B, 7800 kW / 500 rpm with gear (145,6 rpm)
- Controllable pitch propeller

Generators/Bowthruster:

- 1 shaft generator, 900 kW
- 3 generators of 569 kW
- 1 emergency generator of 100 kW
- 700 kW Bow thruster

Speed / Consumption:

- About 16,5 Knots on 29 mt IFO 380csst
- Port consumption idle: 1,7 mt MGO
- Port consumption gear working: 4,4 mt MGO

Tank capacity:

- Heavy fuel oil (IFO): 1006,9 m³
- Diesel oil (MGO): 143,2 m³
- Ballast water: 4483,6 m³
- Fresh Water: 77,3 m³

Reefer plugs:

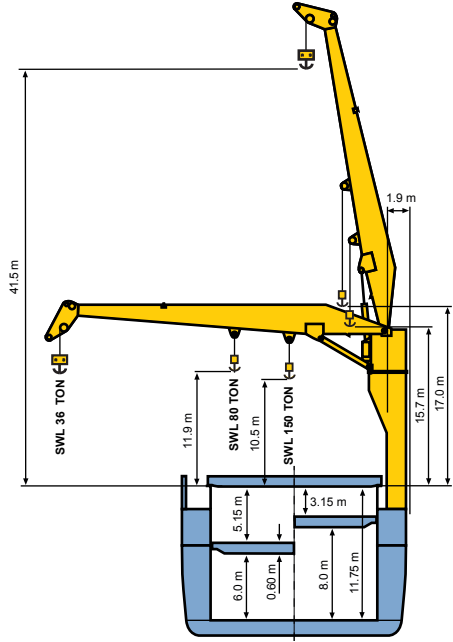
- 24 reefer plugs in hold
- 104 reefer plugs on deck

Container capacity:

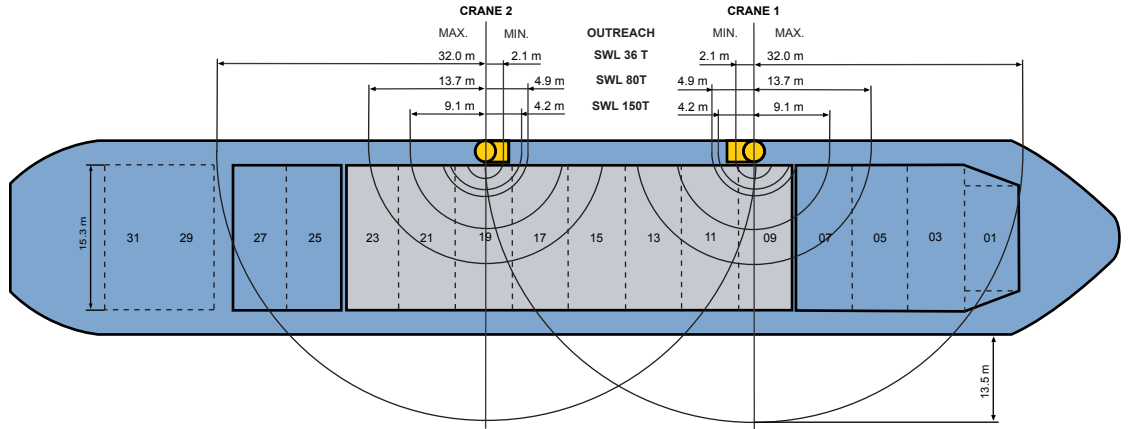
- 903 teus, without tweendeck pontoons on board

M/V KEITUM M/V KAMPEN

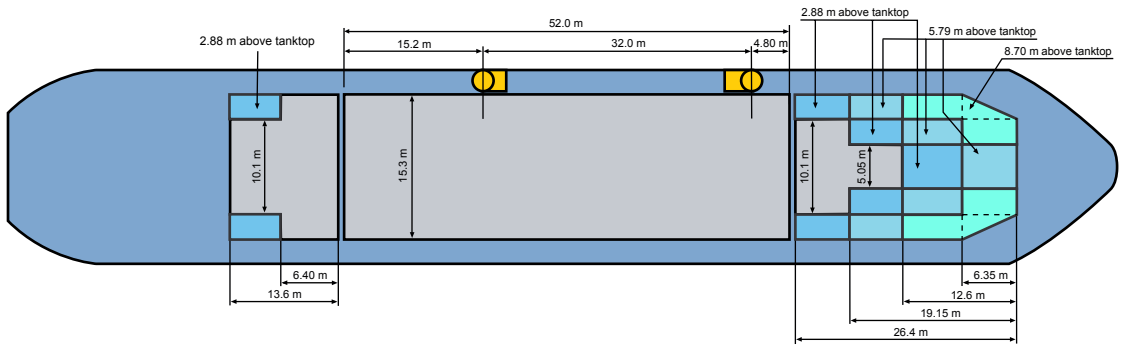
300MT COMBINED LIFTING CAPACITY



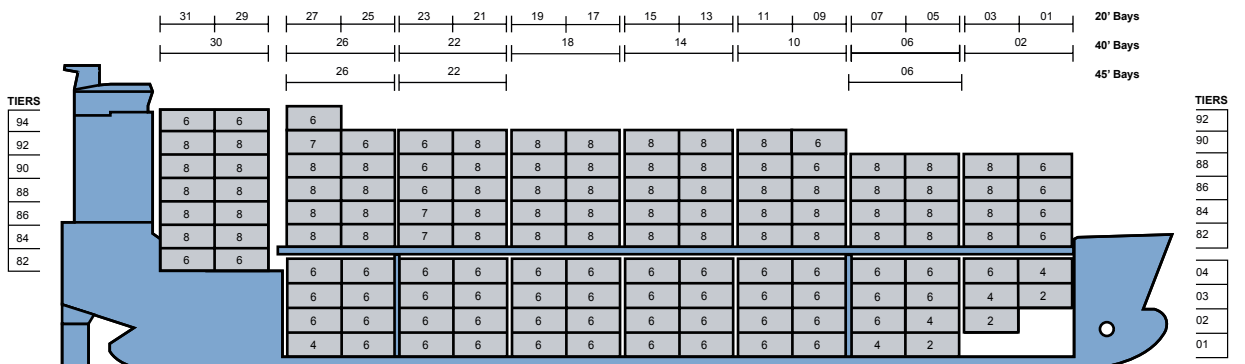
TWEEN DECK



LOWER HOLD



903 TEUS



++++ Details believed to be correct, but are given without guarantee +++++