



## Ships Particulars

(Details are believed to be correct, but are not guaranteed.)

### IMO number/Flag/Build:

– Sharmin: 9114347/Bahamas/1996

### Tonnage:

– DWT (without tweendeck): about 8.970 mt  
 – Weight of tweendeck pontoons: 193 mt  
 – GT/NT: 6.285/3.108  
 – Panama: - /5.358  
 – Suez: 6.680/5.266

### Type:

– Single screw steel multipurpose vessel  
 – Flush tweendeck removable  
 – Non cellular but fully fitted for containers

### Dimensions:

– LOA: 100,8 m  
 – Lpp: 93,1 m  
 – Beam: 20,85 m  
 – Draft Summer SW: 8,21 m  
 – Air draft less draft aft: 43,5 m

### Capacity:

– Grain/Bale (without tweendeck): 363.600 ft<sup>3</sup>/10.296 m<sup>3</sup>  
 – Grain/Bale (with tweendeck): 341.000 ft<sup>3</sup>/9.656 m<sup>3</sup>  
 – 761 m<sup>2</sup> in lower hold platforms lower hold 97 m<sup>2</sup>  
 – 946 m<sup>2</sup> in tweendeck platforms tweendeck 32 m<sup>2</sup>  
 – 648 teus, without tweendeck pontoons onboard

### Heights:

– Lower hold - Tweendeck: 5,80 m  
 – Tweendeck - Hatch cover: 5,0 m  
 – Lower hold - Hatch cover: 11,67 m

### Hatch:

– One large hatch 62,88 x 15,25 m  
 – Mac Gregor non sequential pontoon hatch cover

### Hold:

– One box-shaped doubleskinned cargo hold 62,88 long x 15,25 m wide x 11,55 m high  
 – Steel floored tanktop with flush container shoes  
 – The hold narrows in the fore ship stepwise in container dimensions  
 – The container platforms in the fore part of the hold should be noted  
 – Fitted with a complete set of loose tweendeck steel pontoons

### Stackloads

– Tanktop: 100/128 mt per stack for TEU/FEU

– Hatch covers: 48/64 mt per stack for TEU/FEU  
 – Maindeck aft: 60/80 mt per stack for TEU/FEU

### Hold equipment:

– Electrical ventilation 25 air changes/hour (based on empty hold)  
 – Hold fitted for dangerous cargo  
 – A transverse bulkhead is erectable by use of loose tweendeck steel pontoons at frame 66, 27,6 m from engine bulkhead

### Cranes:

– Two electric hydraulic cranes, each 70mt, mounted in port side combinable up to 140 mt SWL subject to dimensions and hook points of unit to be carried.  
 – Vessel is fitted with a heavylift spreader with 140 mt SWL to be used for heavylift and combined crane operation.  
 – Lifting heights above hatch covers about 18,00 m. Fully self-sustained for a full load of containers in all

### Main engine:

– 1 MaK 8M552C, 6,000 kW at 500 rpm

### Generators/Bowthruster:

– 1 shaft generator of 900 kW  
 – 3 diesel generators of 500 kW  
 – 1 emergency generator of 127 kW  
 – Bow thruster, 500 kW

### Speed / Consumption / Fuel:

– About 15 knots on 22 mt IFO 380cst  
 – Port consumption idle: about 1,0 mt MGO  
 – Port consumption gear working: about 2,5 mt MGO

### Tank capacity:

– Heavy fuel oil (IFO 380): 839 m<sup>3</sup>  
 – Diesel oil (MGO): 105 m<sup>3</sup>  
 – Water ballast: 3.033 m<sup>3</sup>  
 – Fresh Water: 67 m<sup>3</sup>

### Reefer plugs:

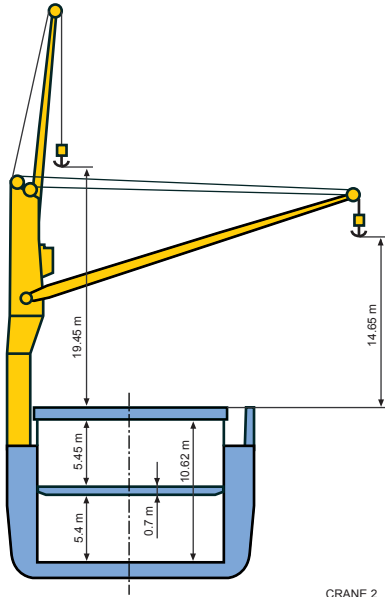
– 34 reefer plugs in hold  
 – 72 reefer plugs on deck

### Container equipment:

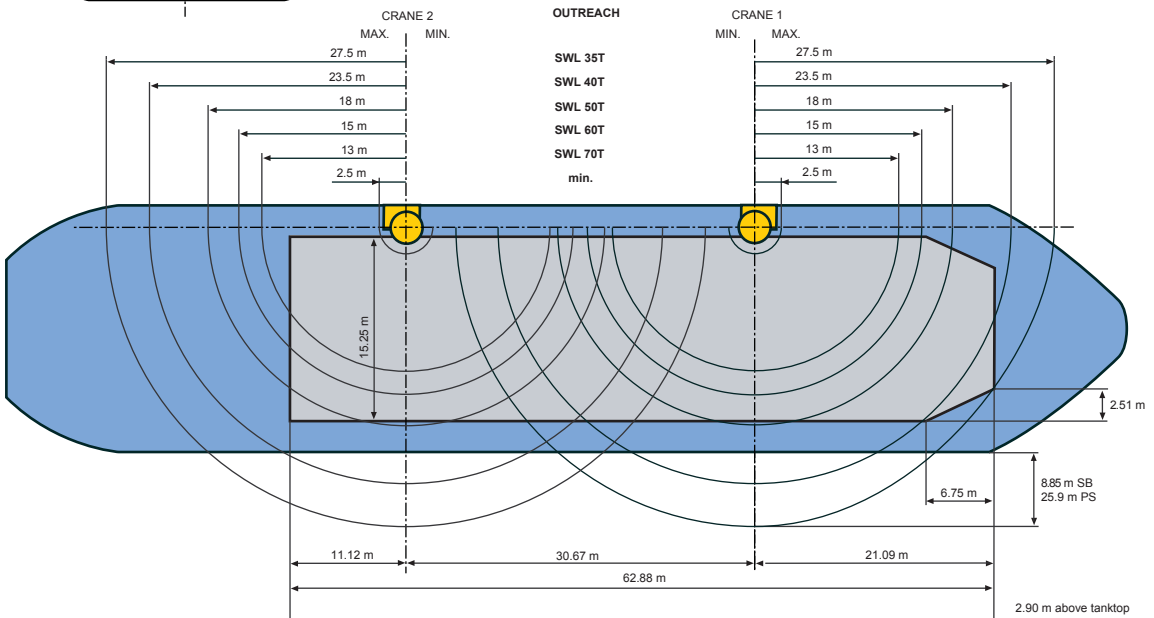
– Vessel is fitted with a full set of container lashing equipment  
 – Vessel is fitted with a 20' spreader and a 40' spreader for container handling

# M/V SHARMIN

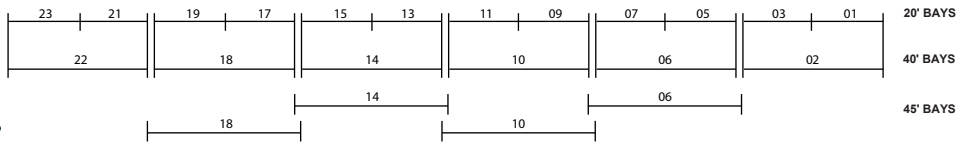
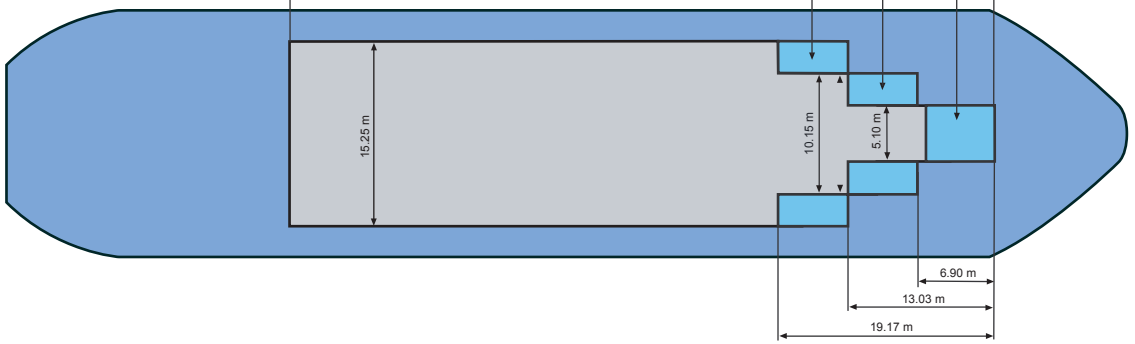
140T COMBINED LIFTING CAPACITY



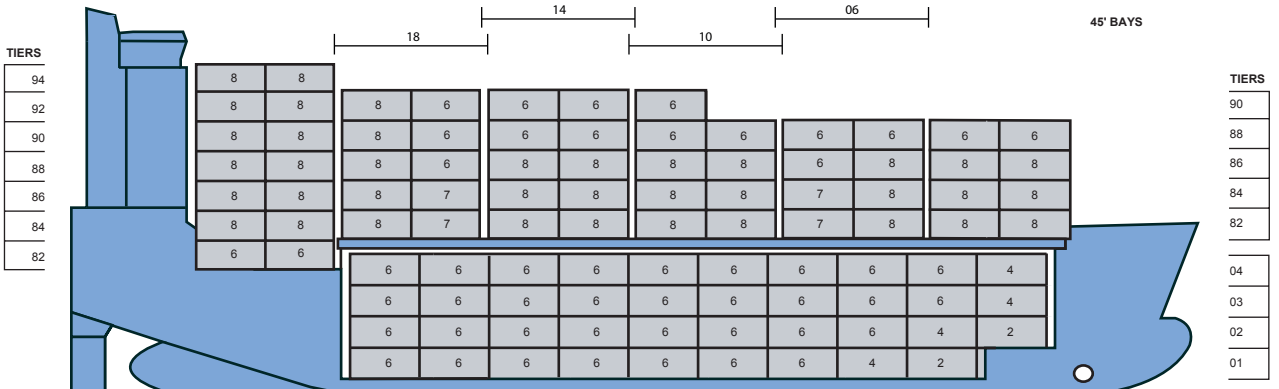
TWEEN DECK



LOWER HOLD



648 TEUS



++++ Details believed to be correct, but are given without guarantee +++++