



Ships Particulars

(Details are believed to be correct, but are not guaranteed.)

IMO number/Flag/Build:

– TEAM Spirit: 9346421 / Malta / 2006

Tonnage:

– DWT (without tweendeck): about 10.700 mt
– GT/NT: 8.407/4.515

Type:

– Heavy lift Multipurpose Dry Cargo Vessel
– Strengthened for heavy cargoes
– Equip. for carriage of containers

Dimensions:

– LOA: 128,65 m
– LBP: 120,60 m
– Breadth mld.: 19,00 m
– Draft Summer SW: 8,70 m
– Depth mld: 11,65 m
– Design draft mld: 8.50 m
– Scantling draft mld: 8.70 m

Holds:

– Number of holds: 2
– Box shaped holds except for part no 1 and aft part no 2 where hold is narrowing.
– 12.90 m x 10.10 m
– 58.05 m x 15,60 m

Tweendecks:

– Number of tweendecks: 2
– 12.90 m x 10.10 m
– 58.05 m x 15,60 m

Hatches:

– Number of main deck hatches: 2
– No 1: 18,90 m x 15,60 m / 10,15 m (3 panels)
– No 2: 58,10 m x 15,60 m (9 panels)

Covers:

– Steel pontoons of about 28 to 33 mtons piece weight.
– All pontoons can be worked by cargo crane.
– No 1: 1. t/d (no. 111) abt. 5,10 m x 6,30 m
2. & 3. t/d (no. 112 + 113) abt. 10,10 m x 6,45 m
– No 2: 9 panels of abt 15,60 m x 6,45 m

Capacity:

– Grain/Bale 13.800 m3
without td hatch covers, same can be stored in front of bridge

Tank top strenghts:

– Tanktop: 18,0 mtons/m²
– Tween deck: 4,0 mtons/m²
– Weather deck: 2,5 mtons/m²
– Hatch covers: 2,0 mtons/m²

Cranes

– 2x60 mt SWL combinable up to 120 mt SWL less weight of traverse
(max outreach swl 60 mt / 16 m, swl 40 mt / 28,5 m)

Machinery/Propeller

– MAK 6M43, output: 6.000 kW on 500 rpm mcr / 5.400 KW on ncr

Generators/Bowthruster:

– 1 shaft generator, 700 kW
– 3 diesel generators of 400 kW
– 1 emergency generator
– Bowthruster

Speed / Consumption:

– About 16 Knots on 24.5 mt IFO 380cst/day without shaftgenerator engaged.
– Port consumption idle: 1,5 mt MDO
– Port consumption gear working: 3,5 mt MDO

Tank capacity:

– Heavy fuel oil (HFO): 890 m³
– Diesel oil (MDO): 200 m³
– Ballast water: 4.450 m³
– Fresh Water: 150 m³

Container capacity:

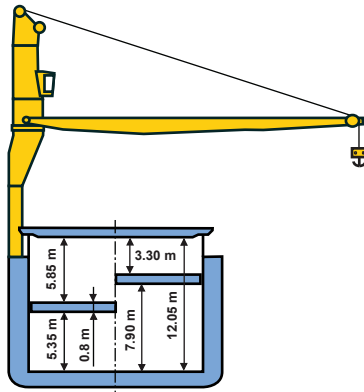
– 676 teus

Reefer plugs:

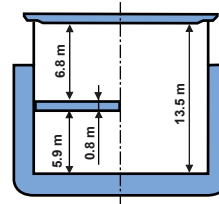
– 60 reefer receptacles for 20' containers

120T COMBINED LIFTING CAPACITY

M/V TEAM SPIRIT

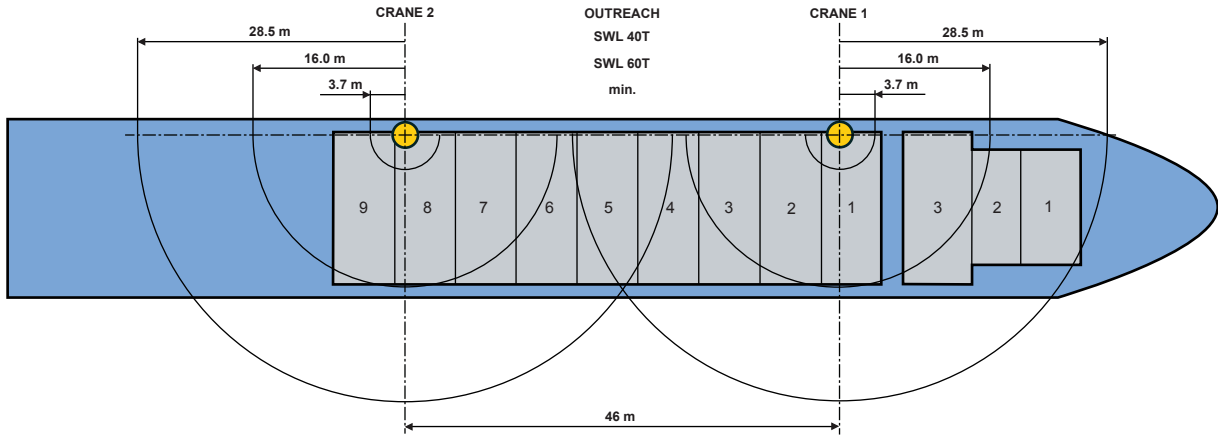


No. 2 Cargo Hold

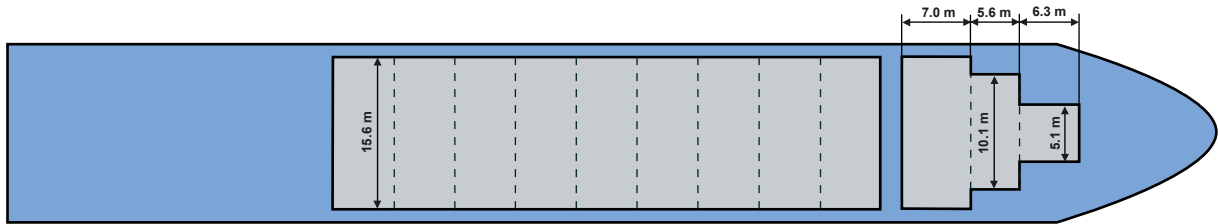


No. 1 Cargo Hold

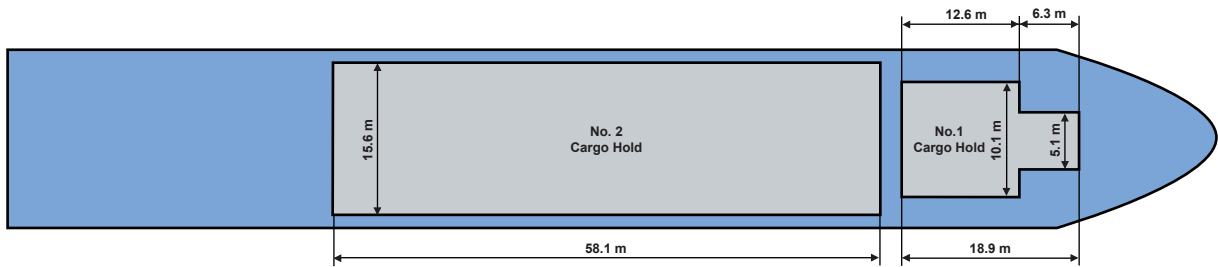
DECK



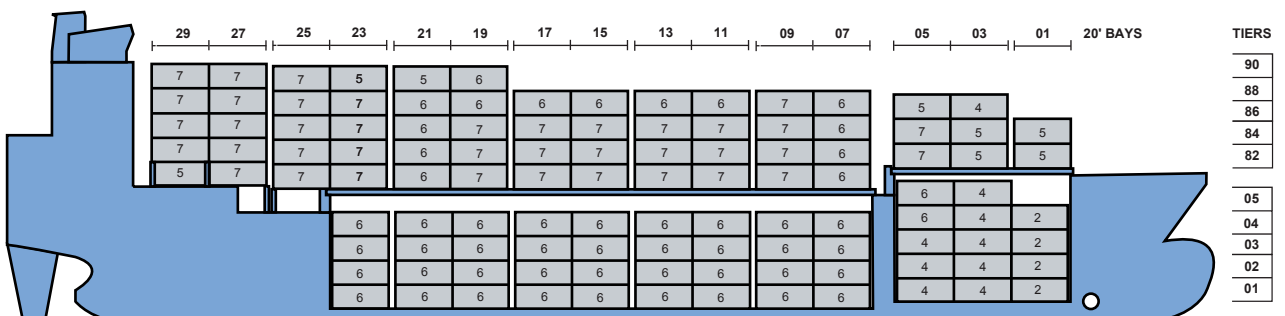
TWEEN DECK



LOWER HOLD



676 TEUS



++++ Details believed to be correct, but are given without guarantee +++++